

- Ensures protection against external rotary and bending forces
- Guide rods run through bearings (./61 roller bearings) protected by wiper rings
- Model QA/8000/61 (Ø 32 to 100 mm) can be fitted with optional locking cartridges



Technical Data

Operation:

QA/8000/51 Guide rods run through bearings

QA/8000/61 Guide rods run through roller bearings

Operating Temperature:

+5°C to +80°C max.

For Cylinder Series:

RA/8000, RA/8000/M Tie rod cylinders Ø 32 to 100 mm

PRA/8000, PRA/8000/M Profile cylinders Ø 32 to 100 mm

RM/8000, RM/8000/M Roundline cylinders Ø 12 to 25 mm

For Cylinder Diameters:

12, 16, 20, 25, 32, 40, 50, 63, 80, 100 mm

Standard Strokes:

50, 100, 160, 200, 250, 320*, 400*, 500 mm*

*Optional for Ø 12 to 25 mm bore

Consult our Technical Service for stroke lengths above 500 mm

Non-standard Strokes:

For cylinder with non-standard strokes length use guiding unit with the next higher standard stroke length.

Other Features:

Locking cartridges for guide block QA/8000/61

Active locking cartridge QA/8000/62

Passive locking cartridge QA/8000/63

Materials:

QA/8000/51: Anodised aluminium guide block nut and mounting plate, sintered bronze slide bearings, stainless steel (Martensitic) rods, nitrile rubber wiper rings.

QA/8000/61, QM/8000/61: Anodised aluminium guide block and mounting plate, guid rods inductive hardened steel, nitrile rubber wiper rings.

Ordering Information

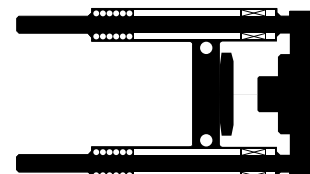
To order a guide block for Ø 40 mm bore ISO cylinder with a 200 mm stroke quote: QA/8040/51/200

To order a guide block with roller bearings for Ø 50 mm bore ISO cylinder with a 320 mm stroke quote: QA/8050/61/320

Accessories

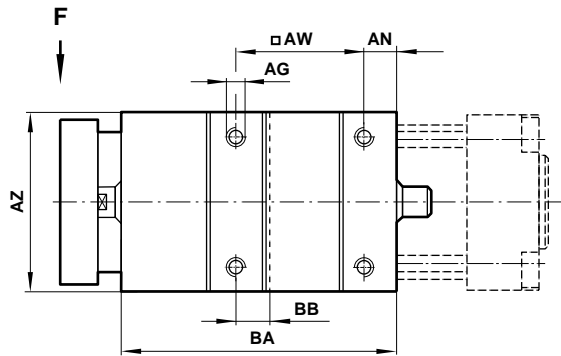
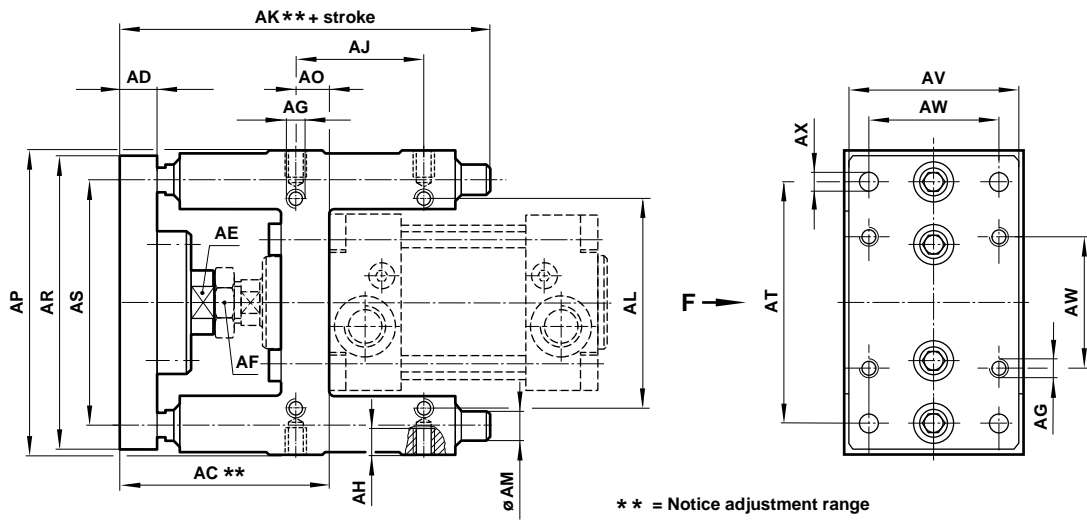
See page

Active or passive locking cartridge N 1.10.021.05





Basic Dimensions QA/8000/51



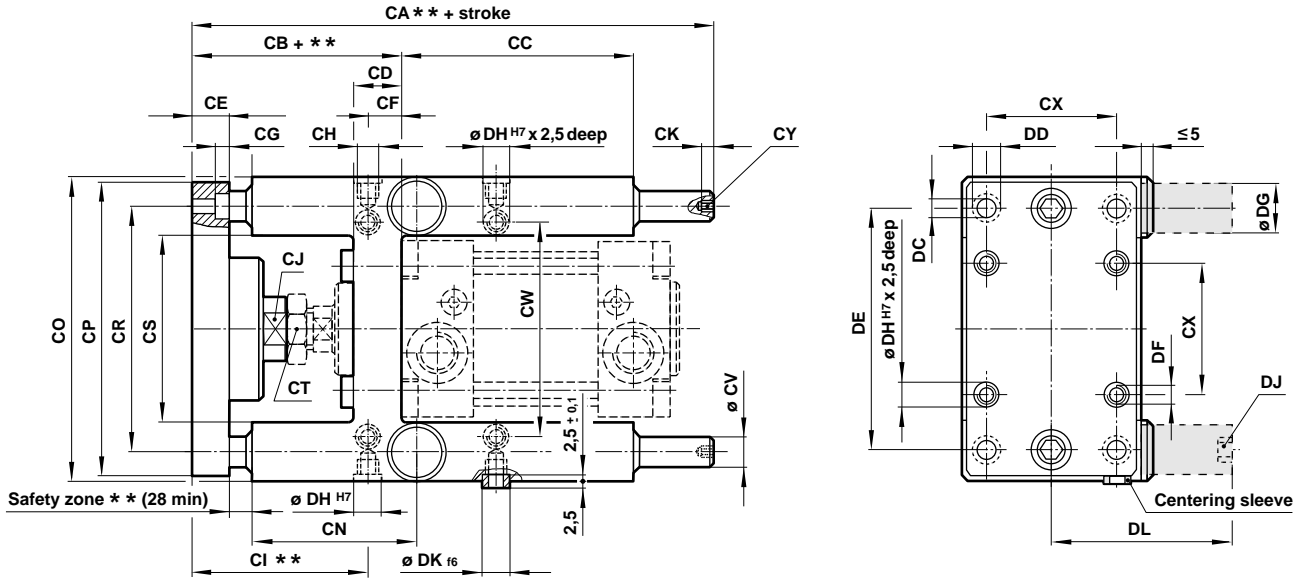
Model	∅	AC + **	AD	AE (A/F)	AF (A/F)	AG	AH	AJ	AK**	AL	∅ AM	AN
QA/8032/51/*	32	69 + 2	12	15	17	M 6	10	32,5	110	58	10	6
QA/8040/51/*	40	74 + 2	12	15	19	M 6	10	38	122	64	12	6
QA/8050/51/*	50	91,5 + 4	15	22	24	M 8	12	46,5	135	80	12	6
QA/8063/51/*	63	92 + 4	15	22	24	M 8	12	56,5	153	95	12	7
QA/8080/51/*	80	106 + 6	15	27	30	M 10	15	50	180	130	16	9
QA/8100/51/*	100	111 + 6	15	27	30	M 10	15	70	199	150	16	9
Model	AO	AP	AR	AS	AT	AV	AW	∅ AX	AZ	BA	BB	
QA/8032/51/*	9	100	90	74	78	45	32,5	6,6	48	76	9	
QA/8040/51/*	11	106	100	80	84	50	38	6,6	56	85	11	
QA/8050/51/*	19	125	120	96	100	60	46,5	9	66	99	19	
QA/8063/51/*	15	132	125	104	105	70	56,5	9	76	114	15	
QA/8080/51/*	14	165	155	130	130	90	72	11	98	134,5	25	
QA/8100/51/*	19	185	175	150	150	110	89	11	118	153,5	28,5	

* Insert stroke length, ** Notice adjustment range

Note: Supplied complied with mounting screws for cylinder



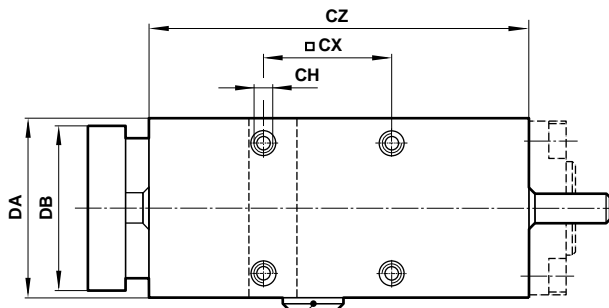
Basic Dimensions QA/8000/61 (32 to 100 mm bore)



** = Notice adjustment range

Separate Locking Cartridge

Guide blocks Model	Locking cartridge 'Active'	Locking cartridge 'Passive'	Locking forces (N)
QA/8032/61/*	QA/8032/62	QA/8032/63	600
QA/8040/61/*	QA/8040/62	QA/8040/63	1000
QA/8050/61/*	QA/8050/62	QA/8050/63	1400
QA/8063/61/*	QA/8050/62	QA/8050/63	1400
QA/8080/61/*	QA/8080/62	QA/8080/63	2500
QA/8100/61/*	QA/8080/62	QA/8080/63	2500



BLANKING PLUG
(remove when using locking cartridge)

Model	∅	CA**	CB + **	CC	CD	CE	CF ±0.2	CG	CH	CI**	CJ	CK
QA/8032/61/*	32	177	89 + 5	76	27	12	4,3	6,5	M6 x 12 deep	84,5	13	5
QA/8040/61/*	40	192	99 + 5	81	32	12	11	6,5	M6 x 12 deep	88	15	6
QA/8050/61/*	50	237	114 + 10	79	39	15	18,8	9	M8 x 16 deep	94	22	6
QA/8063/61/*	63	237	114 + 10	111	39	15	15,3	9	M8 x 16 deep	98,5	22	6
QA/8080/61/*	80	280	135 + 10	128	49	20	21	11	M10 x 20 deep	114	27	7
QA/8100/61/*	100	280	140 + 10	128	54	20	24,5	11	M10 x 20 deep	115,5	27	7
Model	CN	CO -0.3	CP	CR	CS	CT	∅ CV f7	CW	CX ±0.2	CY (A/F)	CZ	DA -0.3
QA/8032/61/*	61	97	90	74	50,5	17	12	61	32,5	5	125	50
QA/8040/61/*	67	115	110	87	58,5	19	16	69	38	6	140	58
QA/8050/61/*	75,5	137	130	104	70,5	24	20	85	46,5	6	150	70
QA/8063/61/*	84	152	145	119	85,5	24	20	100	56,5	6	182	85
QA/8080/61/*	102	189	180	148	105,5	30	25	130	72	8	215	105
QA/8100/61/*	111	213	200	172	130,5	30	25	130	89	8	220	130
Model	DB ±0.3	∅ DC	∅ DD	DE ±0.2	DF	DG	DH H7	DJ	DK f6	DL		
QA/8032/61/*	45	6,6	11	78	45	M 6	9	M 5	9	45		
QA/8040/61/*	54	6,6	11	84	57	M 6	9	G 1/8	9	57		
QA/8050/61/*	63	9	15	100	70	M 8	11	G 1/8	11	70		
QA/8063/61/*	80	9	15	105	80	M 8	11	G 1/8	11	80		
QA/8080/61/*	100	11	18	130	80	M 10	13	G 1/8	13	80		
QA/8100/61/*	120	11	18	150	112	M 10	13	G 1/8	13	112		

* Insert stroke length, ** Notice adjustment range

Note: Supplied complete with mounting screws for cylinders and two centering sleeves.

Warning

These products are intended for use in industrial compressed air systems only. Do not use these products where pressures and temperatures can exceed those listed under 'Technical Data'.

Before using these products with fluids other than those specified, for non-industrial applications, life-support systems, or other applications not within published specifications, consult NORGREN.

Through misuse, age, or malfunction, components used in fluid power systems can fail in various modes.

The system designer is warned to consider the failure modes of all component parts used in fluid power systems and to provide adequate safeguards to prevent personal injury or damage to equipment in the event of such failure.

System designers must provide a warning to end users in the system instructional manual if protection against a failure mode cannot be adequately provided.

System designers and end users are cautioned to review specific warnings found in instruction sheets packed and shipped with these products.