

EXCELON® 74
Shut-Off & Lockout Valves
3/8", 1/2", 3/4" Port Sizes

- EXCELON design allows in-line or modular installation
- T74B 2-port/2-position shut-off valves no exhaust
- T74T 3-port/2-position shut-off valves with 1/8" tapped exhaust
- T74E 3-port/2-position lockout valves help conform to OSHA Lockout Regulations in USA market. Exhaust outlet is not tapped.
- Valves can be quickly closed by manually pushing the slide
- Slide can be locked in the closed position with a customer supplied padlock
- Modular installations with EXCELON 72, 73, and 74 series can be made to suit particular applications


Technical Data

Fluid: Compressed air

Maximum pressure: 17 bar (250 psig)

Temperature range: -20° to 65°C (0° to 150°F)

* Air supply must be dry enough to avoid ice formation at temperatures below +2°C (+35°F).

Cv factor:

IN to OUT ports:

3/8" ports: 7,1

1/2" ports: 8,1

3/4" ports: 7,7

OUT to EXHAUST ports on 3-port/2-position valves: 0,2

Exhaust port threads on T74T models:

1/8 PTF with PTF main ports

1/8" ISO R_C with ISO G and ISO R_C main ports

Materials:

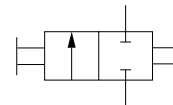
Body: Zinc

Slide: Acetal plastic

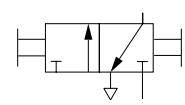
Elastomers: Nitrile

Ordering Information

See *Ordering Information* on the following pages.

ISO Symbols


2-Port/2-Position



3-Port/2-Position



Ordering Information.

Models listed have ISO G parallel threads.

Port Size	2-Port/2-Position Padlock closed only. No exhaust outlet.	3-Port/2-Position OSHA Padlock closed only. Unthreaded exhaust outlet.	3-Port/2-Position Padlock closed only. Threaded exhaust port (1/8").	Weight kg (lbs)
G3/8	T74B-3GA-P1N	T74E-3GA-P1N	T74T-3GA-P1N	0,32 (0.69)
G1/2	T74B-4GA-P1N	T74E-4GA-P1N	T74T-4GA-P1N	0,30 (0.65)
G3/4	T74B-6GA-P1N	T74E-6GA-P1N	T74T-6GA-P1N	0,28 (0.62)

Alternative Models

T 7 4 ★ - ★ ★ A - P 1 ★



Valve Type	Substitute
2-port/2-position (Black slide locks in closed position only) No exhaust outlet	B
3-port/2-position (Yellow slide locks in closed position only) Unthreaded exhaust outlet	E
3-port/2-position (Red slide locks in closed position only) Threaded exhaust port	T

Options	Substitute
None	N
Silencer installed in T74T exhaust port	S

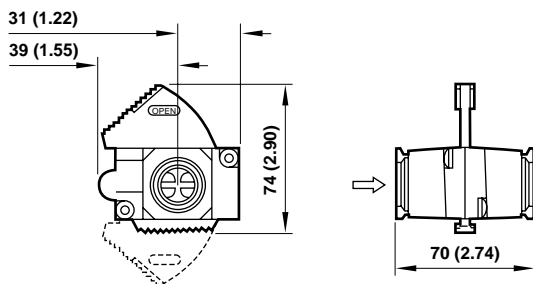
Threads	Substitute
PTF	A
ISO R _c taper	B
ISO G parallel	G

Port Size	Substitute
3/8"	3
1/2"	4
3/4"	6

Accessories

 Lockout Hasp Use up to 6 padlocks with shackle up to 8mm (5/16")	 Silencer for T74T models only (field installation)
54547-01	R 1/8 threads: 04 0330 01 000 1/8 PTF threads: MS001A

Dimensions mm (inches)



Service Kits

Item	Type	Part Number
Service kit	T74B (black slide)	4384-711
	T74E (yellow slide)	4384-710
	T74T (red slide)	4384-713

Service kit includes seals and slide.

Warning

These products are intended for use in industrial compressed air systems only. Do not use these products where pressures and temperatures can exceed those listed under 'Technical Data'.

Before using these products with fluids other than those specified, for non-industrial applications, life-support systems, or other applications not within published specifications, consult Norgren.

Through misuse, age, or malfunction, components used in fluid power systems can fail in various modes. The system designer is warned to consider the failure modes of all component parts used in fluid power systems and to provide adequate safeguards to prevent personal injury or damage to equipment in the event of such failure.

System designers must provide a warning to end users in the system instructional manual if protection against a failure mode cannot be adequately provided.

System designers and end users are cautioned to review specific warnings found in instruction sheets packed and shipped with these products.