

Effective liquid removal and positive solid particle filtration

Large filter element area provides minimum pressure drop

High flow unit with large valve and diaphragm

Push to lock adjusting knob with tamper resistant option

Excellent flow and regulation characteristics

Technical data

Fluid:

Compressed air

Maximum pressure:

17 bar

Operating temperature:

-20° ... +80°C

Consult our Technical Service for use below +2°C

Particle removal:

5, 25, 40 µm

Air quality:

Within ISO 8573-1, Class 3 and Class 5 (particulates)

Typical flow at 10 bar inlet pressure, 6,3 bar set pressure and a droop of 1 bar from set:

240 dm³/s

1/4 turn manual drain connection:

1/8" pipe thread

Automatic drain connection:

1/8" pipe thread

Automatic drain operating conditions (float operated):

Bowl pressure required to close drain: Greater than 0,3 bar

Bowl pressure required to open drain: Less than 0,2 bar

Minimum air flow required to close drain: 1 dm³/s

Manual operation: Depress pin inside drain outlet to drain bowl

Nominal bowl size:

0,5 litre, 1 litre

Gauge ports:

1/8 PTF with PTF yoke ports

Rc1/8 with ISO Rc yoke ports

Rc1/8 with ISO G yoke ports



Materials

Body: aluminium

Yoke: aluminium

Bonnet: aluminium

Adjusting knob: acetal resin

Optional T-bar adjusting screw: steel

Valve: aluminium

Bowl: aluminium

Sight glass: Pyrex

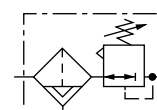
Element: sintered bronze or polypropylene

Elastomers: synthetic rubber

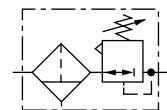
Ordering information

See *Ordering Information* on the following pages.

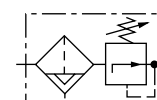
ISO Symbols



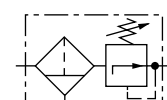
Automatic drain
Relieving



Manual drain
Relieving



Automatic drain
Non-relieving

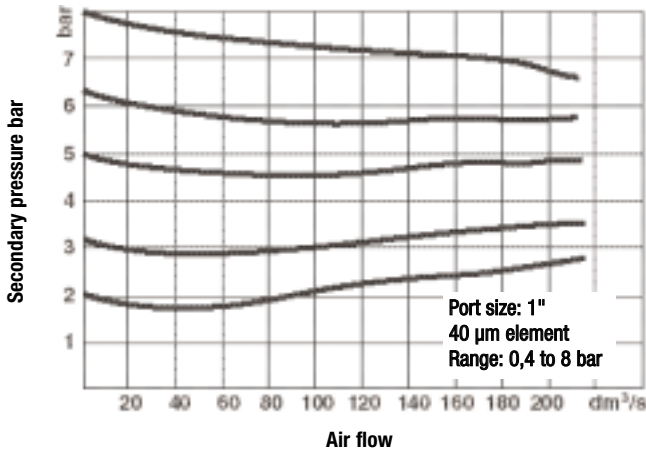


Manual drain
Non-relieving



Typical performance characteristics

Supply pressure 10 bar



Ordering information

Models listed include a 0,5 litre bowl and short element, yoke with ISO G threads, knob adjustment, automatic drain, 40 µm element, relieving diaphragm, and a 0,4 to 8 bar outlet pressure adjustment range*. A gauge is not included.

Port size	Flow dm ³ /s #	Model	kg
G3/4	240	B68G-6GK-AR3-RLN	2,94
G1	240	B68G-8GK-AR3-RLN	2,82
G1¼	240	B68G-AGK-AR3-RLN	2,92
G1½	240	B68G-BGK-AR3-RLN	2,76

Typical flow with 10 bar inlet pressure, 6,3 bar set pressure and a 1 bar droop from set.

Alternative models

B 6 8 ★ - ★ ★ ★ - ★ ★ ★ - ★ ★ ★

Bowl/element type	Substitute	Gauge	Substitute
0,5 litre (1 pint) bowl and short element	G	With	G
1 litre (1 quart) bowl and long element	E	Without	N
Port size	Substitute	Outlet pressure adjustment range	Substitute
3/4"	6	0 ... 4 bar	F
1"	8	0,4 ... 8 bar	L
1¼"	A	0,7 ... 17 bar	S**
1½"	B	Diaphragm	Substitute
No yoke	N	Relieving	R
Threads	Substitute	Non relieving	N
PTF	A	Element	Substitute
ISO Rc taper	B	5 µm	1
ISO G parallel	G	25 µm	2
No yoke (N in 5th position)	N	40 µm	3
Rc threaded gauge ports		Bowl	Substitute
No yoke (N in 5th position)	A	1 l without liquid level indicator	C##
PTF threaded gauge ports		0,5 l without liquid level indicator	M#
Adjustment	Substitute	0,5 l with liquid level indicator	R#
Knob	K	1 l with liquid level indicator	U##
T-bar	T		
Drain	Substitute		
Automatic	A		
No drain (Closed bowl)	E		
Manual	M		
Manual, 1/4 turn	Q		

* Outlet pressure can be adjusted to pressures in excess of, and less than, those specified. Do not use these units to control pressures outside of the specified ranges.

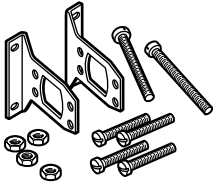
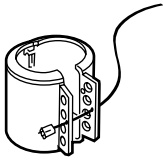

** Units with 17 bar adjustment range are available only with the T-bar adjustment; therefore substitute T at the 7th digit and S at the 12th position.

Only available with B68G.

Only available with B68E.

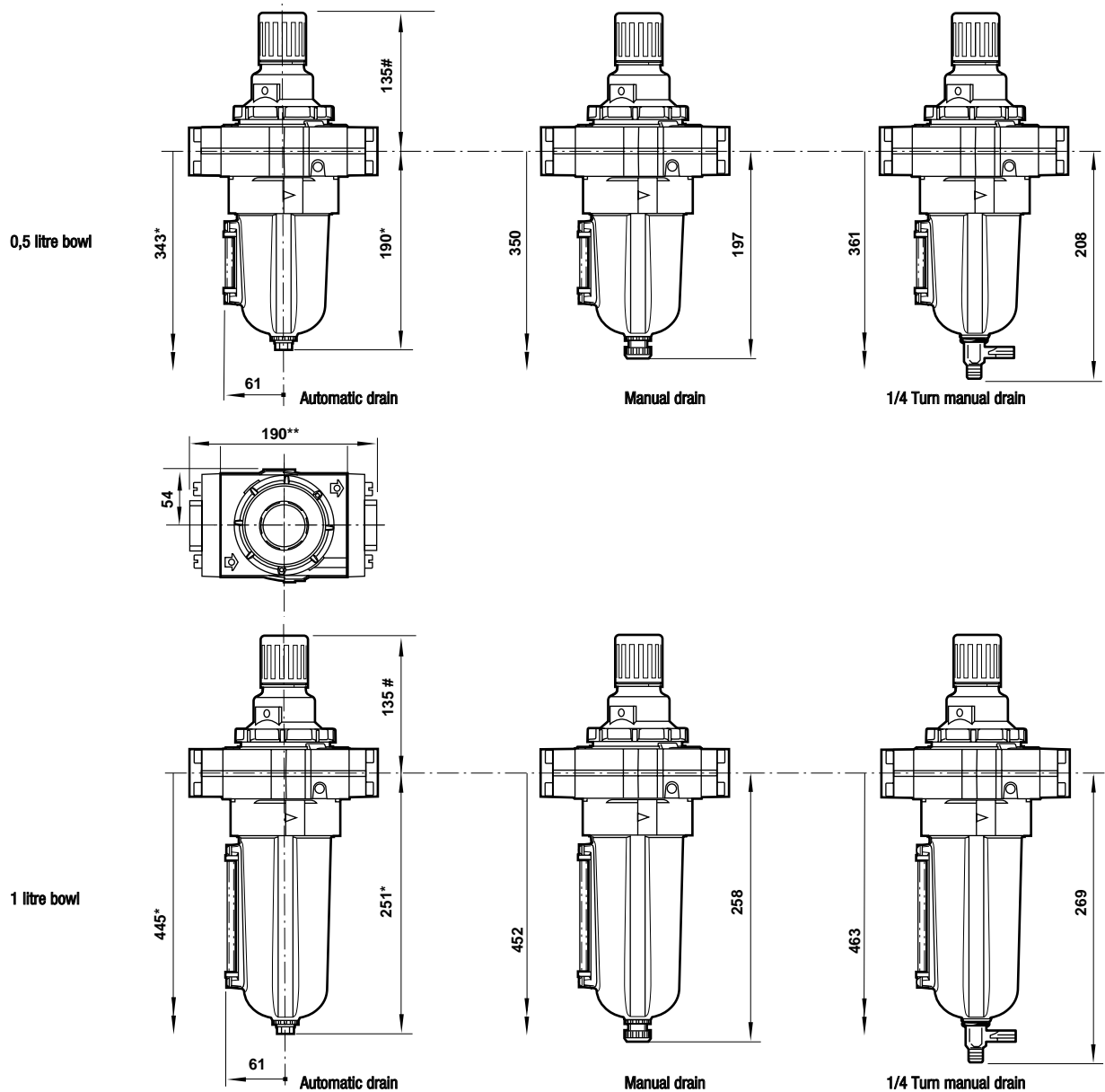


Accessories

Wall mounting bracket	Tamper resistant cover and seal wire*	Ø 50 mm Pressure gauge	R1/8 Connection	1/8 PTF Connection
				
3/4" ported yoke: 18-001-979	Cover and wire: 4355-51	4 bar: 18-013-011	18-013-011	18-013-202
1" ported yoke: 18-001-979	Replacement wire: 2117-01	10 bar: 18-013-013	18-013-013	18-013-204
1 1/4" ported yoke: 18-001-978		25 bar: 18-013-014	18-013-014	18-013-206
1 1/2" ported yoke: N/A				

* Use padlock with shackle up to 8 mm diameter.

Dimensions



Add 37 mm for unit with T-bar adjustment.

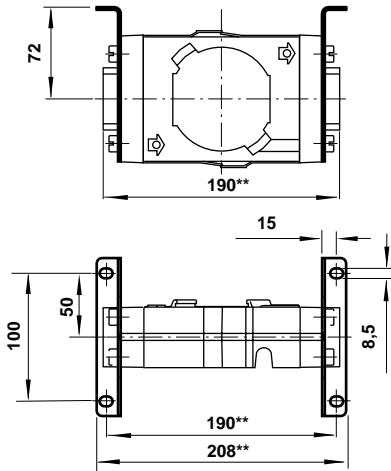
* Minimum clearance required to remove bowl. Dimension also applies to closed bottom bowl.

** For 1 1/4" and 1 1/2" ported yokes, add 10 mm.



Bracket mounting

Use 4 mm screws to mount bracket to wall.



** Add 10 mm for 1¼" and 1½" models.

Bracket kit reference

Item	Type	Model
	3/4" ported yoke	18-001-979
Wall bracket	1" ported yoke	18-001-979
	1¼" ported yoke	18-001-978
	1½" ported yoke	N/A

Service kits

Item	Type	Model
Service kit	Relieving	4383-300
	Non relieving	4383-301
Replacement elements	5 µm (0,5 litre bowl)	5576-97
	25 µm (0,5 litre bowl)	5576-98
	40 µm (0,5 litre bowl)	5576-99
	5 µm (1 litre bowl)	5311-01
	25 µm (1 litre bowl)	5311-02
Replacement sight glass kit	0,5 litre	4380-060
	1 litre	4380-061
Replacement drains	Automatic (G 1/8 outlet)	3000-97
	Automatic (1/8 NPT outlet)	3000-10
	Manual	684-84
	Manual quarter turn	619-50

Service kit includes, valve spring, slip ring, valve assembly, diaphragm assembly and necessary seals and 'O' rings.

Warning

These products are intended for use in industrial compressed air systems only. Do not use these products where pressures and temperatures can exceed those listed under 'Technical Data'.

Before using these products with fluids other than those specified, for non-industrial applications, life-support systems, or other applications not within published specifications, consult **NORGREN**.

Through misuse, age, or malfunction, components used in fluid power systems can fail in various modes.

The system designer is warned to consider the failure modes of all component parts used in fluid power systems and to provide adequate safeguards to prevent personal injury or damage to equipment in the event of such failure.

System designers must provide a warning to end users in the system instructional manual if protection against a failure mode cannot be adequately provided.

System designers and end users are cautioned to review specific warnings found in instruction sheets packed and shipped with these products.