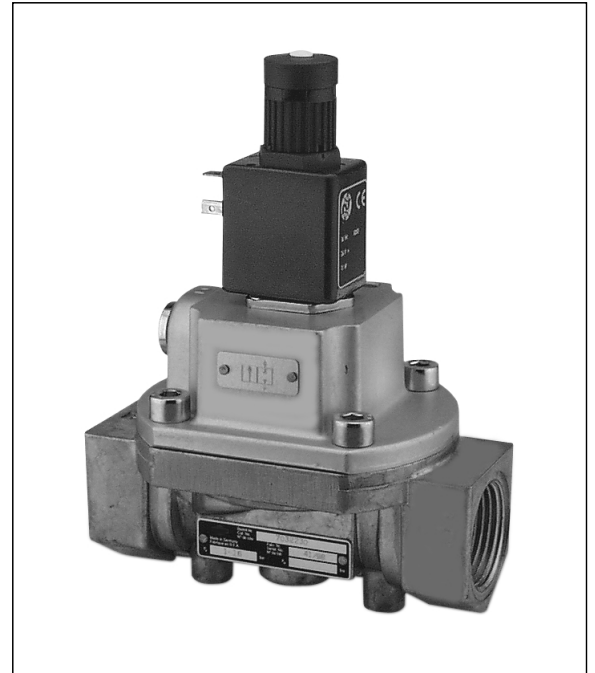


**2/2 Directional Control Valves
Actuation: Electromagnetic
Indirectly-controlled poppet valves
Connections G 1/2 to G 2**

- **High flow rates**
- **For high switching frequency even with low electrical power consumption**
- **Easily interchangeable solenoid system**
- **Standard manual override with normally closed valves**


Technical data
Operating medium:

For filtered, lubricated or non-lubricated air

Mode of operation:

Solenoid operated, indirectly controlled

Mounting position:

Optional, preferably vertical; with strong vibration vertical

Flow direction:

Fixed

Nominal size:

12 to 50 mm

Connection:

G 1/2 to G 2

Operating pressure:

Up to 18 bar, depending on design

Temperature range:

-10* to +60 °C

* With minus temperatures, use conditioned dry air.

Material:

Housing: Aluminium

Seat seal AU (polyurethane)

Inner part: POM

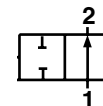
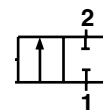
Ordering example

2/2 directional control valve, nominal size 25, connection G 1, solenoid 24 V DC, electrical connection DIN 43650 form A, protection class IP 00

Type: 7032230.0200.024.00

Connectors

See data sheet 7503364





General information

Symbol	Type Valvel . Solenoid	Connection	Nominal size	Operating pressure (bar)		Control pressure (bar)		Flow (l/min)	Switchingt time (ms)	Weight (kg)	Dimensional drawing No.
				Min.	Max.	Min. ²⁾	Max. ²⁾				
	7030117.0200 *	G 1/2	12	1	16	–	–	3000	20	0.2	M01
	7030119.0200 *)	G 1/2	12	1	18	–	–	3000	20	0.2	M01
	7032130.0200 *	G 3/4	20	1	16	–	–	8500	25	1.2	M03
	7032230.0200 *	G 1	25	1	16	–	–	8500	25	1.2	M03
	7032330.0200 *	G 1 1/4	32	1	16	–	–	10600	40	1.3	M03
	7032430.0200 *	G 1 1/2	40	1	10	–	–	29400	190	2.6	M03
	7032530.0200 *	G 2	50	1	10	–	–	29400	190	2.6	M03
	7030707.0200 *)	G 1/2	12	1	18	–	–	3000	20	0.2	M01
	7032630.0200 *	G 3/4	20	1	15	–	–	8500	25	1.2	M03
	7032730.0200 *	G 1	25	1	15	–	–	8500	25	1.2	M03
	7032830.0200 *	G 1 1/4	32	1	15	–	–	10600	40	1.3	M03
	7032930.0200 *	G 1 1/2	40	1	10	–	–	29400	190	2.6	M03
	7033030.0200 *	G 2	50	1	10	–	–	29400	190	2.6	M03
	7032131.0200 *	G 3/4	20	0	15	1	16	8500	25	1.2	M03
	7032231.0200 *	G 1	25	0	15	1	16	8500	25	1.2	M03
	7032331.0200 *	G 1 1/4	32	0	15	1	16	10600	40	1.3	M03
	7032431.0200 *	G 1 1/2	40	0	10	1	11	29400	190	2.6	M03
	7032531.0200 *	G 2	50	0	10	1	11	29400	190	2.6	M03
	7032631.0200 *	G 3/4	20	0	14	1	15	8500	25	1.2	M03
	7032731.0200 *	G 1	25	0	14	1	15	8500	25	1.2	M03
	7032831.0200 *	G 1 1/4	32	0	14	1	15	10600	40	1.3	M03
	7032931.0200 *	G 1 1/2	40	0	10	1	11	29400	190	2.6	M03
	7033031.0200 *	G 2	50	0	10	1	11	29400	190	2.6	M03

Valves for vakuum

	7030118.0200 *	G 1/2	12	1 mbar	6	4	10	3000	20	0.55	M02
	7032132.0200 *	G 3/4	20	1 mbar	6	4	10	8500	25	1.2	M03
	7032232.0200 *	G 1	25	1 mbar	6	4	10	8500	25	1.2	M03
	7032332.0200 *	G 1 1/4	32	1 mbar	6	4	10	10600	40	1.3	M03
	7032432.0200 *	G 1 1/2	40	1 mbar	6	4	10	29400	190	2.6	M03
	7032532.0200 *	G 2	50	1 mbar	6	4	10	29400	190	2.6	M03
	7030709.0200 *	G 1/2	12	1 mbar	6	4	10	3000	20	0.55	M02
	7032632.0200 *	G 3/4	20	1 mbar	6	4	10	8500	25	1.2	M03
	7032732.0200 *	G 1	25	1 mbar	6	4	10	8500	25	1.2	M03
	7032832.0200 *	G 1 1/4	32	1 mbar	6	4	10	10600	40	1.3	M03
	7032932.0200 *	G 1 1/2	40	1 mbar	6	4	10	29400	190	2.6	M03
7033032.0200 *	G 2	50	1 mbar	6	4	10	29400	190	2.6	M03	



* When ordering please indicate solenoid, voltage and current type (frequency).

¹⁾ For fluid temperature to max. 100 °C.

²⁾ Required pilot pressure 1 bar ≥ operating pressure; with vacuum min. 4 bar, with positive pressure = operating pressure + 4 bar.



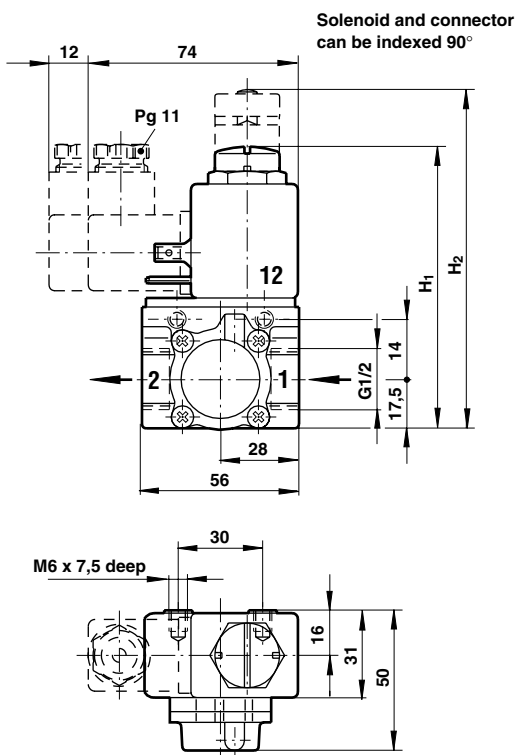
Parameters for solenoids

	Type	Current draw		Protection class	Temperature		Weight (kg)	Dimensional drawing No.	Circuit diagram No.
		24 V DC (W)	230 V AC (VA)		fluid max. (°C)	Ambient (°C)			
	0200	12	15	IP 00 without Connector	+80	-25 to +60	0.14	M04	SB01
	0201	12	15	IP 65 with Connector	+80	-25 to +60	0.14	M04	SB01
	3930	12	–	EEx me II T5 EEx me II T6	+60 +45	-20 to +60 -20 to +45	0.3	M05	SB04
	3931	–	13	EEx me II T5 EEx me II T6	+60 +45	-20 to +60 -20 to +45	0.3	M05	SB07

Standard voltages 24 V DC; 24 V, 110 V, 230 V 50 Hz; 120 V, 220 V 60 Hz.
Further voltages on request

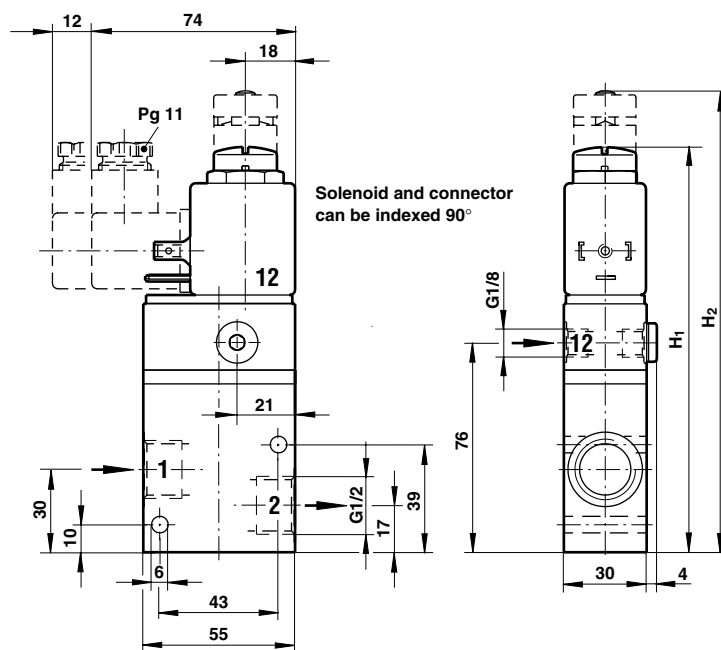
Dimensional drawings

M01



Type	H ₁	H ₂
7030117	–	121
7030119	–	121
7030707	100	–

M02

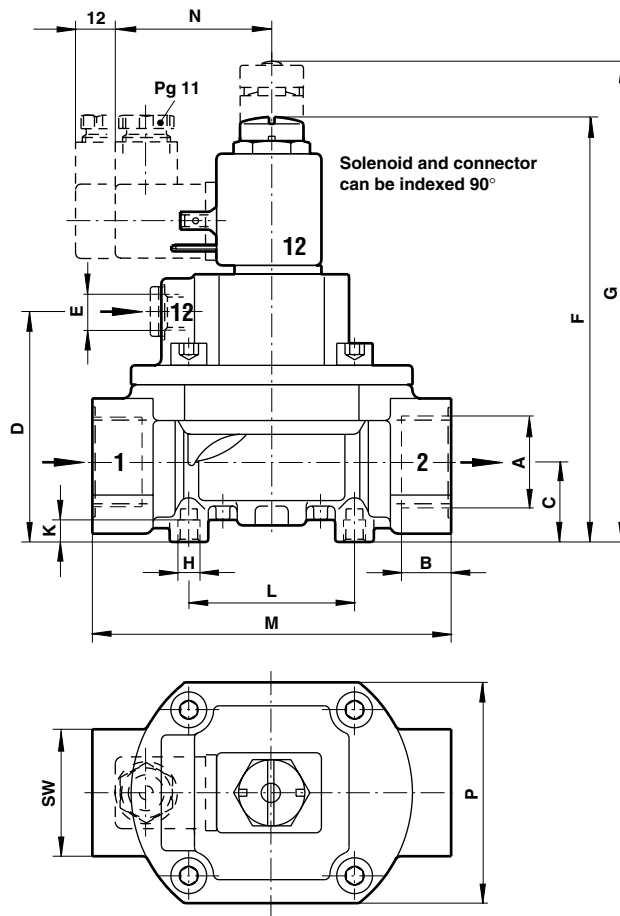


Type	H ₁	H ₂
7030118	–	167
7030709	147	–



Dimensional drawing

M03

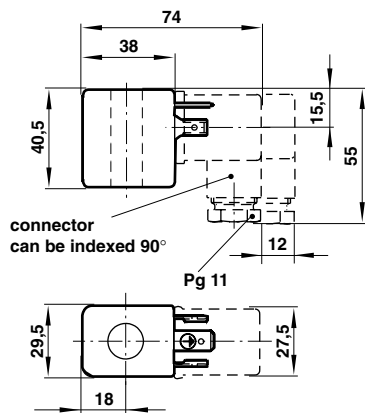


Type	A	B	C	D	E	F	G	H	K	L	M	N	P	SW
703213X	G3/4	20	29	83,5	G1/4	-	174	M8	8	60	130	55	80	46
703263X	G3/4	20	29	83,5	G1/4	154	-	M8	8	60	130	55	80	46
703223X	G1	18	29	83,5	G1/4	-	174	M8	8	60	130	55	80	46
703273X	G1	18	29	83,5	G1/4	154	-	M8	8	60	130	55	80	46
703233X	G1 1/4	20	33	91	G1/4	-	181	M8	8	60	130	55	Ø 108	55
703283X	G1 1/4	20	33	91	G1/4	161	-	M8	8	60	130	55	Ø 108	55
703243X	G1 1/2	28	45	132,5	G1/4	-	222	M8	12	90	182	55	Ø 142	75
703293X	G1 1/2	28	45	132,5	G1/4	202	-	M8	12	90	182	55	Ø 142	75
703253X	G2	28	45	132,5	G1/4	-	222	M8	12	90	182	55	Ø 142	75
703303X	G2	28	45	132,5	G1/4	202	-	M8	12	90	182	55	Ø 142	75

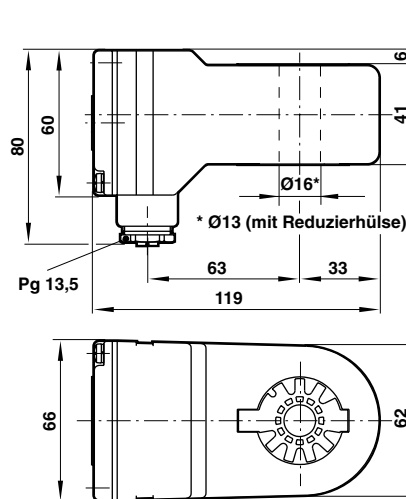


Dimensional drawings solenoids

M04

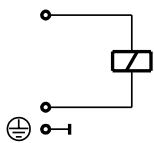


M05

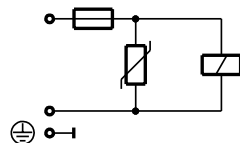


Electrical circuit diagrams

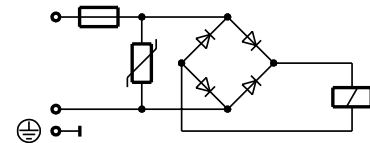
SB01



SB04



SB07



Warning

These products are intended for use in industrial compressed air systems only. Do not use these products where pressures and temperatures can exceed those listed under 'Technical Data'.

Before using these products with fluids other than those specified, for non-industrial applications, life-support systems, or other applications not within published specifications, consult NORGREN.

Through misuse, age, or malfunction, components used in fluid power systems can fail in various modes. The system designer is warned to consider the failure modes of

all component parts used in fluid power systems and to provide adequate safeguards to prevent personal injury or damage to equipment in the event of such failure.

System designers must provide a warning to end users in the system instructional manual if protection against a failure mode cannot be adequately provided.

System designers and end users are cautioned to review specific warnings found in instruction sheets packed and shipped with these products where applicable.





